

SHEPHERD'S BUSH

BY



HOME & EQUITY
INVESTMENT LTD



In The Heart of

W E S T L O N D O N



Project Overview

The project involves the conversion of a single-family house into three separate apartments, tapping into the robust demand for housing in this strategically located area.

AVAILABLE APARTMENTS

One unit of 3 bedroom apartment

Two units of 1 bedroom apartment

Market Analysis

Shepherd's Bush, situated in West London, stands out as a prime investment location for several reasons:

Strategic Location: The neighborhood enjoys excellent connectivity to central London and other key areas, thanks to its proximity to major transportation hubs including tube stations (Shepherd's Bush market, Shephard's Bush and Goldhawk road). This accessibility appeals to commuters and residents alike.

Diverse Demographics: Shepherd's Bush attracts a diverse population, including young professionals, families, and students. This demographic diversity contributes to a stable and resilient housing market, ensuring consistent demand for rental properties.

Regeneration and Development: Ongoing regeneration projects and infrastructure improvements in Shepherd's Bush have bolstered property values and enhanced the overall attractiveness of the area. This trend is expected to continue, further driving investment interest and capital appreciation.

Rental Market Dynamics: The rental market in Shepherd's Bush remains robust, supported by a combination of factors such as proximity to employment centers, educational institutions, and leisure amenities. One and two-bedroom apartments are particularly sought after, presenting an opportunity to capitalise on rental income potential.

Investment Opportunity:

We invite investors to participate in this compelling opportunity to capitalise on the burgeoning property market in Shepherd's Bush, London. By investing in our house flipping project, you'll gain exposure to a prime location with strong market fundamentals and attractive returns potential. Together, we can unlock the full value of this property and deliver optimal outcomes for all stakeholders involved.

For further details or to express interest in this investment opportunity, please contact

[Your Contact Information].

Thank you for considering this exciting venture in Shepherd's Bush, London.



About Shepherd's bush

Shepherd's Bush is a busy, multicultural neighbourhood with a mix of houses and offices. Young professionals crowd the area's cocktail bars, pubs, and live music venues like the O2 Shepherd's Bush Empire. The enormous Westfield London mall is home to retail chains, luxury boutiques, and global restaurants. Colourful stalls in Shepherd's Bush Market offer fresh produce, prepared food, and African fabrics.

*Where everyday
feels like a
staycation*



London fare zone 2



Transport links

Shepherd's Bush is a major transport interchange in West London. Five London Underground stations serve the area

Shepherd's Bush (Central Line) – at the eastern apex of Shepherd's Bush Green, near the Westfield shopping centre

Shepherd's Bush Market (Hammersmith & City and circle line) – to the north-west of the Green, on Uxbridge Road

Goldhawk Road (Hammersmith & City and circle line) – to the south-west of the Green, on Goldhawk Road

White City (Central Line) – to the north of the Westfield shopping centre

Wood Lane (Hammersmith & City and circle line) – to the north of the Westfield shopping centre



Location

Located in Shepherd's Bush West London this site comprises of a Residential Opportunity currently configured as a four storey end of terrace town house.

Sheperd's Bush is an affluent area of west London, the site is 10 minutes from Oxford street, 13 minutes from Mayfair and 14 minutes from Knightsbridge. Westfield shopping center is 5 minute walk from the property.

Situated 700 meters (0.4 miles) from Shepherd's Bush Underground Station, 900 meters (0.6 miles) North of Hammersmith Underground Station and 1,000 meters (0.6 miles) West of Kensington Olympia Station.



3

Bedrooms + 2 Bath

1

Bathrooms + 2 Bath



*Get to
anywhere in
no time*

13

Minutes Away

Location to Mayfair

10

Minutes Away

Location to Oxford street

14

Minutes Away

Location to Knightsbridge



Lakeside Road
West Kensington, W14s



*Surrounded By
Everything*



Market

Shepherd's Bush Market:

Shepherd's Bush Market is a 110-year-old market situated in the heart of west London. With a diverse range of traders and goods, there's something on offer for everyone. Open Monday - Saturday, It's a hive of activity between Uxbridge Road and Goldhawk Road.



The sweet spot between convenience and connectivity."



E
V
E
R
Y
T
H
I
N
G

Y
O
U

N
E
E
D

Parks

Shepherd's Bush Green

Shepherd's Bush Green (also known as Shepherd's Bush Common) is an approximately 8-acre triangular area of open grass surrounded by trees and roads with shops in Shepherd's Bush, an area of west London which takes its name from the Green.

Holland Park

A tranquil oasis in Kensington, West London, Holland Park provides 54 acres of gardens, green spaces and playgrounds and includes large areas of woodland, sports facilities, playground and cafe, plus a Japanese Kyoto Garden.

Ravenscourt Park

Ravenscourt Park or RCP is an 8.3 hectares public park and garden located in the London Borough of Hammersmith and Fulham, England. It is one of the Borough's flagship parks, having won a Green Flag Award. Park including tennis courts, a basketball court, a bowling green, a lake and a child-friendly café.

What's a city
without its **parks**

Shepherd's Bush Green



Holland Park



Ravenscourt Park



*The Fun
Starts Here.*

Let the spark ignite your
imagination.

Entertainment

O2 Shepherd's Bush Empire

O2 Shepherd's Bush Empire is one of London's most iconic and prestigious Listed theatres. Est 1903. The landmark live music venue in Edwardian theatre, hosting eclectic programme of rock, pop and comedy. Was hailed 'Best Venue' for the fifth time at the Music Week Awards 2005



Westfield London

Home to more than 350 shops, boutiques, restaurants, cafes, entertainment venues and things to do, Westfield London is the ultimate destination for London's best day out.

With iconic brands from the UK and around the world including John Lewis & Partners, Marks & Spencer, Sephora, Zara, H&M, Primark, TK Maxx, and many, many more, Westfield London is a fashionista's paradise.

But there's more than just fashion at Westfield London, with dozens of retailers featuring the latest gadgets and tech, showstopping beauty, revitalising health and wellness, and this season's hottest homewares.

And if you want a luxury shopping experience like no other, The Village at Westfield London is home to some of the most famous names in fashion and accessories including Tiffany & Co., Gucci, Louis Vuitton, and Versace.



Dining for Everyone

There's something for even the pickiest eaters with almost 100 places to eat and drink at Westfield London, ranging from family favourites such as Pizza Express, McDonald's and Chipotle to more upscale eateries including Flat Iron, Salt Yard and Copper Chimney

The Village

Step into The Village - London's premier luxury shopping destination.

The world's most iconic high-end brands are here - including Tiffany & Co., Prada, and Louis Vuitton - as well as hands-free shopping, shopper lounges and valet parking making The Village a London shopping experience like no other.

Discover The Village today, and experience the finest in high-end shopping.

Vue Cinema at Westfield London

Vue Westfield London is a state-of-the-art complex with 20 screens and almost 3,000 seats. All screens are fitted with Digital Dolby 6.1 Surround Sound & Sony 4k screens. Vue is dedicated to giving each and every guest an exceptional big screen experience.

Vue is located on Level 2, above the Food Court.

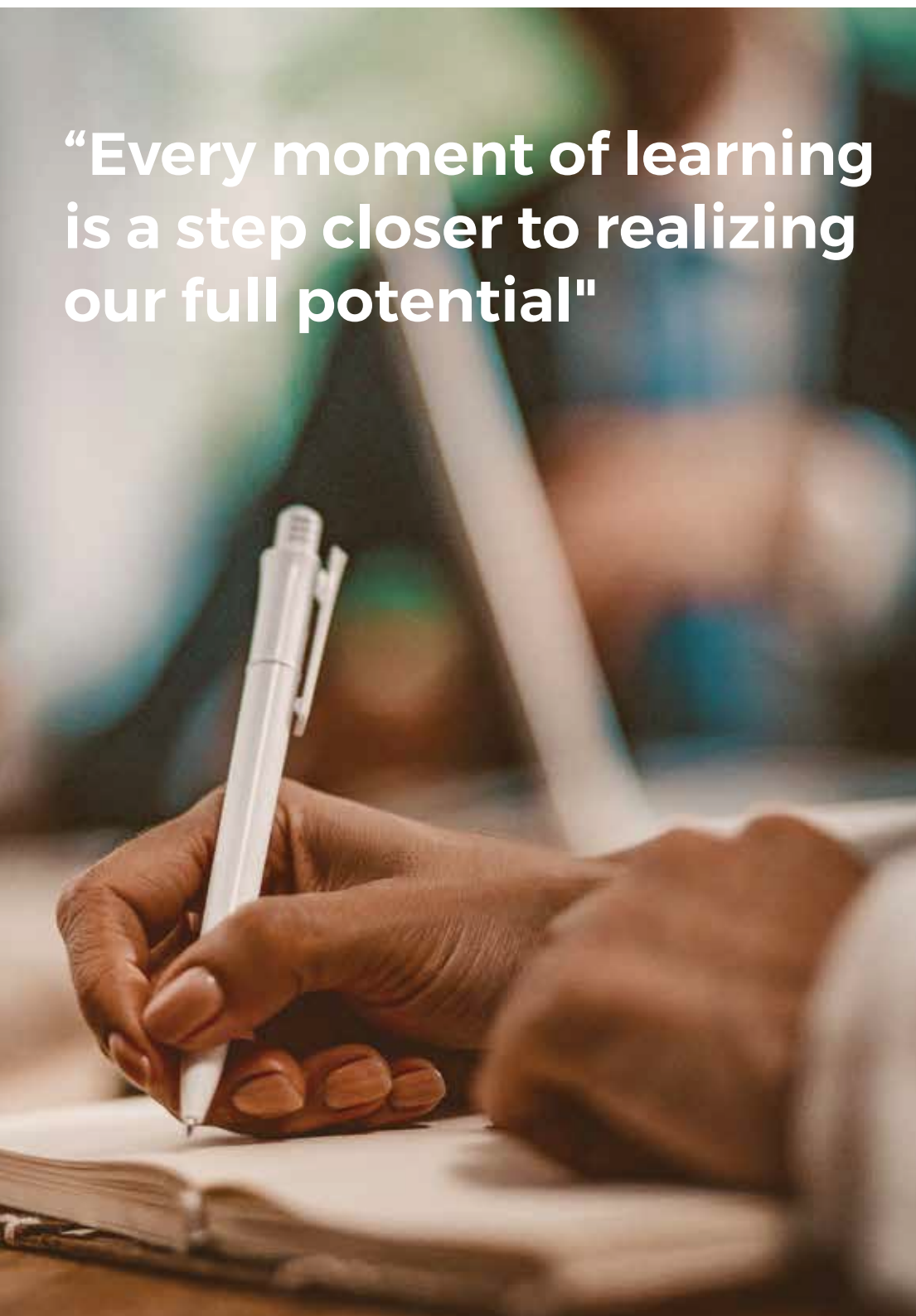




PUBLIC
SUBWAY

UNDERGROUND

The lifestyle you truly deserve



“Every moment of learning
is a step closer to realizing
our full potential”

Schools

There are many excellent local state and private schools in the locality which are among some of the best the capital can offer.

Here are some of the excellent primary schools in Shepherd's Bush

Old Oak Primary School.

Good Shepherd RC Primary School.

St John XXIII Catholic Primary School.

St Stephen's CofE Primary School.

Wormholt Park Primary School.

Woodlane High School.

Phoenix Academy.

Jack Tizard School.

Here are some of the best Schools In Hammersmith

Latymer Upper School.

The Godolphin and Latymer School.

St Peter's Primary School.

Ark Conway Primary Academy.

Larmenier & Sacred Heart Catholic Primary School.

“Learning
Never
Stops.”

Interiors

For Indicative purpose





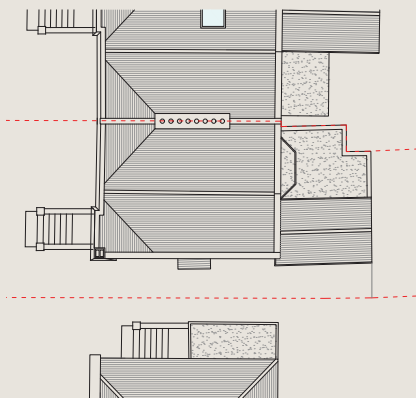
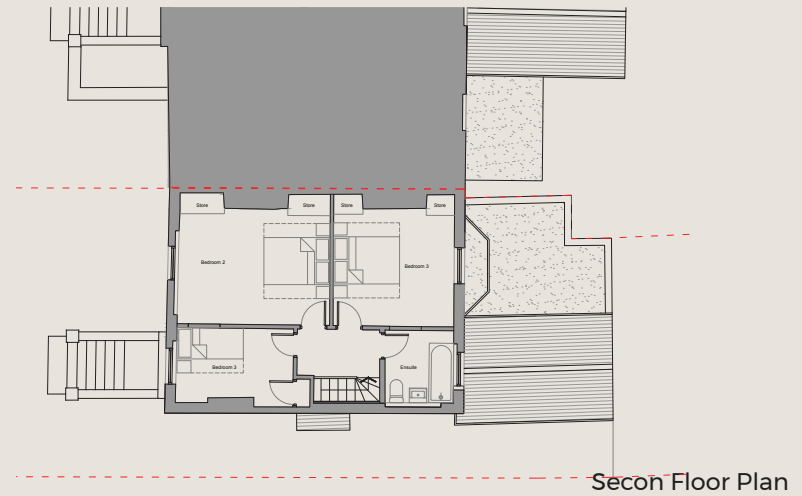
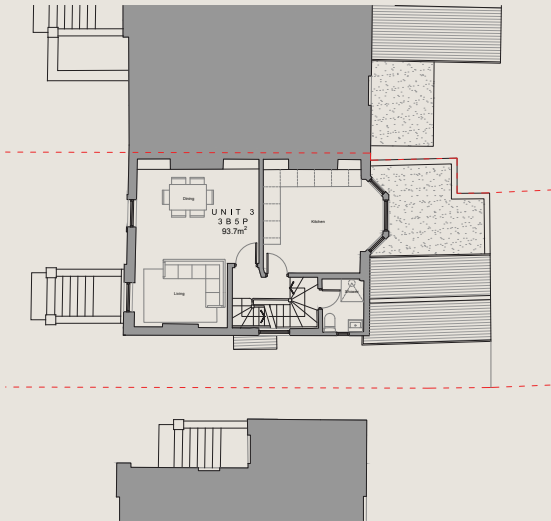
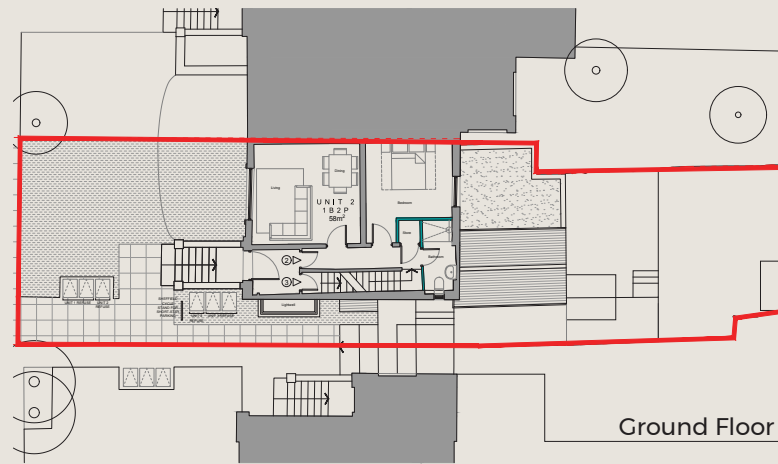
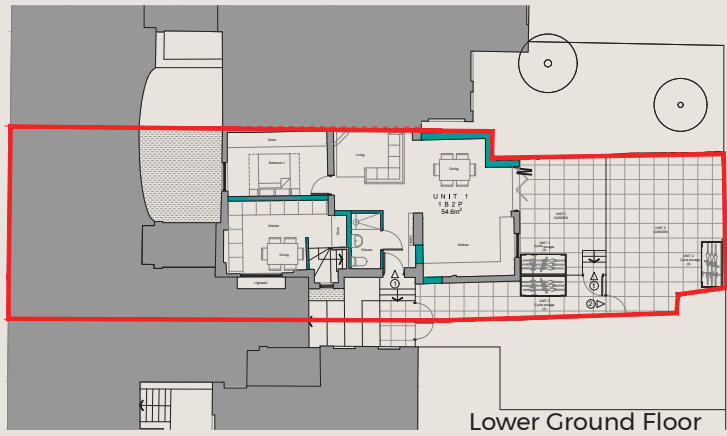
Properly[✓]



Floor-Plans

For Indicative purpose





"Life's best moments happen right here."





In The Heart of

W E S T L O N D O N



SHEPHERD'S BUSH



FOR MORE INFORMATION

Edmund - +44 7950 158367

Olu - +44 7958 178885